

## Model SR-202

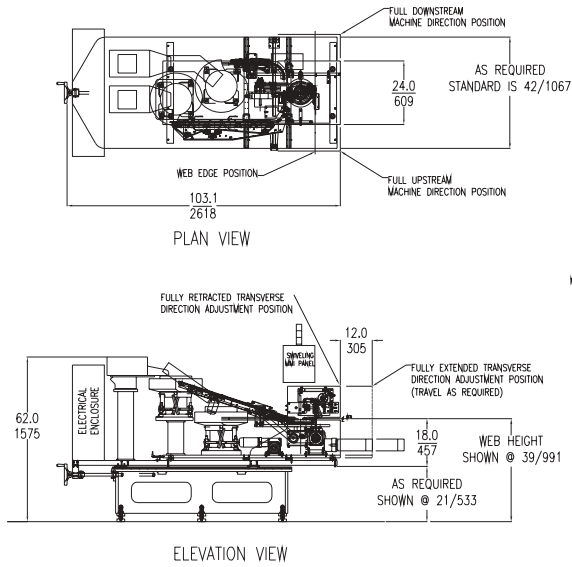


### FEATURES

- Applies the slider and end clip in one step, minimizing space requirements
- Automatically adjusts to film print registration for accurate end clip attachment
- Stand alone design includes electrical panel and operator interface on a single machine frame
- Handles typical polyethylene and laminate pouch materials up to 7 mils (.18 mm)
- Servo driven with industrial PC based controller
- Optional Preseal and ETM attachments available
- For shaped and side-gusseted applications, optional wide-clip inserter available

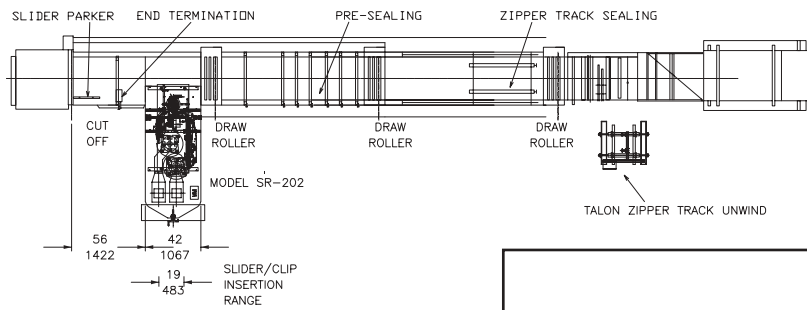
### MACHINE SPECIFICATIONS

Production Speed:	100 pouches per minute
(Optional):	120 pouches per minute
Pouch Widths:	Standard: 3 to 20 inches (76 to 508 mm) Above 20 inches available on request
Electrical Requirements:	240 VAC, 3 phase, 50 – 60 Hz 15 amps max.
Compressed Air Requirements:	5 SCFM (141 liters/min), 50 PSI (3.4 atm)
Shipping Weight (Approx.):	6,500 lbs. (2955 kg)



**MODEL SR-202 FRONT VIEW**

With optional Preseal and ETM modules



**TYPICAL POUCH LINE LAYOUT A**

SR-202 positioned between cross seal and cutoff

**TYPICAL POUCH LINE LAYOUT B**

SR-202 with optional Preseal and ETM positioned prior to cross seals

NEEDS	SLIDE-RITE SOLUTIONS
Increased Customer Satisfaction	<ul style="list-style-type: none"> <li>Patented Easy Open, Easy Close slider system.</li> <li>Stays closed more securely.</li> </ul>
Reclosable System Performance	<ul style="list-style-type: none"> <li>Positive close every time.</li> <li>Patented end-termination that keeps the slider on the bag.</li> <li>Contaminant resistant track options.</li> </ul>
Consumer Safety and Product Integrity	<ul style="list-style-type: none"> <li>Below the track tamper evident option with patented score line, offering a range of opening forces and high/low burst strengths.</li> <li>High retention slider for child safety.</li> </ul>
Product Differentiation	<ul style="list-style-type: none"> <li>True value-added packaging.</li> <li>Variety of track, clips and slider offerings for custom applications.</li> </ul>
Proven Technology	<ul style="list-style-type: none"> <li>Over 10 years of experience in slider technology.</li> <li>Over 40 patents issued.</li> <li>Multiple consumer packages commercialized.</li> </ul>
Machine Compatibility	<ul style="list-style-type: none"> <li>Compatible with numerous Open-Fill-Seal and manually-fed sealing equipment.</li> <li>Slider Integration technology available as part of OEM machinery or as a retrofit.</li> </ul>